



USB 3.0 to HDMI 4K Display Adapter

Quick Installation Guide

Model: BVU5500HS

Safety Instructions

Please carefully read the following safety instructions:

Save this Quick Start Guide for future references

Do not expose this device to any liquids, moisture or heat

Copyright Statement

No part of this publication may be reproduced in any form by any means without the prior written consent. Other trademarks or brand names mention herein are trademarks or registered trademarks of their respective companies.

Disclaimer

The information in this document is subject to change without notice. Diamond Multimedia does not make any representations or warranties (implied or otherwise) regarding the accuracy and completeness of this document and shall in no event be liable for any loss of profit or any commercial damage, including but not limited to special, incidental, consequential, or other damage

WEEE Directive & Product Disposal



At the end of its serviceable life, this product should not be treated as household or general waste. It should be handed over to the applicable collection point for the recycling of electrical and electronic equipment, or returned to the supplier for disposal.

Introduction

The Diamond USB 3.0 to HDMI adapter is a multi-mode adapter that supports a maximum 4K (3840 x 2160) resolution at 30Hz. It can extend your image/video to an external display such as a projector, HDTV or HDMI-based monitor. Whether you need to extend additional monitor for work, stock market, conference this adapter is your perfect solution.

Features:

4K HDMI port

Portable Compact Design

USB 3.0

Built in USB cable, supports Type C and 3.0 ports

Resolution support: 680 x 480@60Hz up to 3840 x 2160@30Hz

Supports Mirrored or Extended Desktop modes

Content Adaptive Technology (GPU decreased CPU loading)

System Requirements:

Microsoft Windows 7, 8, 8.1 and 10

Mac OS 10.10.x or higher

RAM: 4GB

Monitor: 4K monitor to support 4K resolutions

Package Contents:

BVU5500HS 4K Display adapter x 1

USB 3.0 Type A to Type C Converter x 1

HDMI to DVI Converter x 1

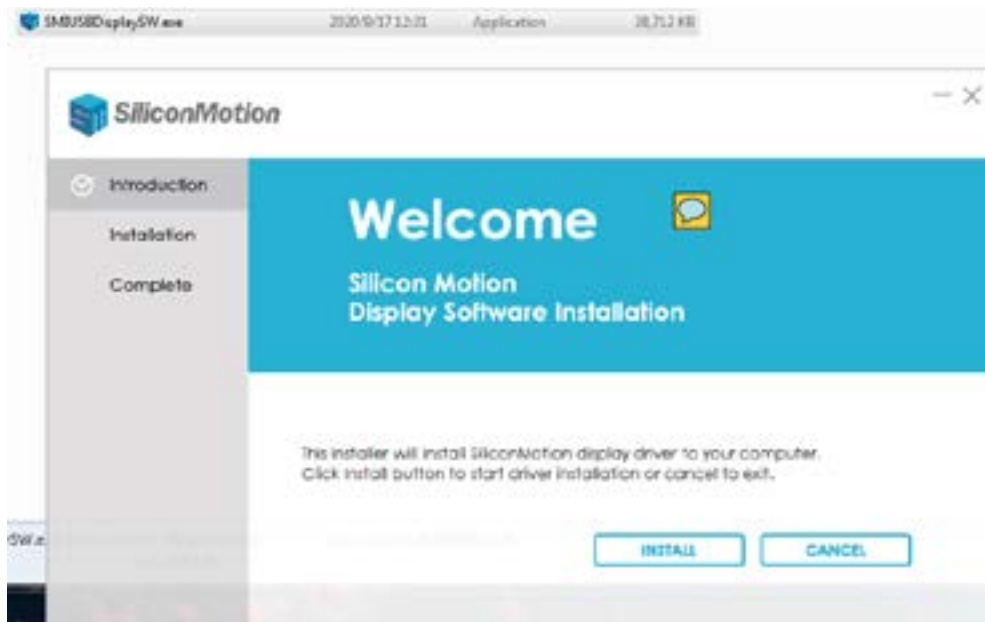
Quick Start Guide x 1

Windows Driver Installation

Note: The Diamond BVU5500HS uses the Silicon Motion USB Graphics Solution. To ensure you have the latest drivers visit the link below and Download the latest Windows driver

<https://www.siliconmotion.com/downloads/index.html>

Click on the EXE file, if it asks you to extract do so and then run the EXE file in the extracted folder.



Follow the on screen steps, if prompted to reboot do so.

Windows Display Setting Mode

1. Right click anywhere on your desktop and select “Display Settings”



2. Select Monitor 1 or 2. Note: Monitor 2 will most likely be your BVU5500HS adapter display



3. Scroll down to the Multiple Display section and select the mode you want to use. Duplicate will show the same image on both screens, Extended will show you two separate Desktops.

Mac OS installation

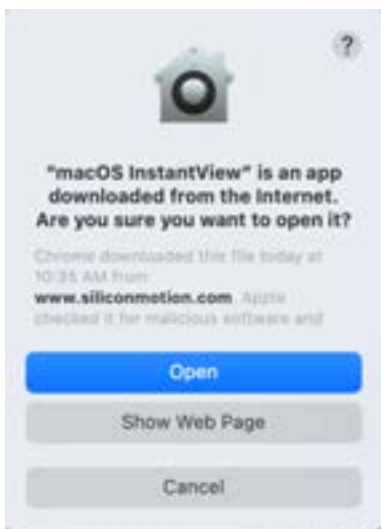
Note: The Diamond BVU5500HS uses the Silicon Motion USB Graphics Solution. To ensure you have the latest drivers visit the link below and Download the latest Mac OS driver for your version of OS. The instructions below are based on Mac OS Big Sur

<https://www.siliconmotion.com/downloads/index.html>

1. Run the .dmg file
2. Drag the macOS InstantView into the application folder as shown below:



3. Open your Applications folder and run the macOS InstantView file and select Open

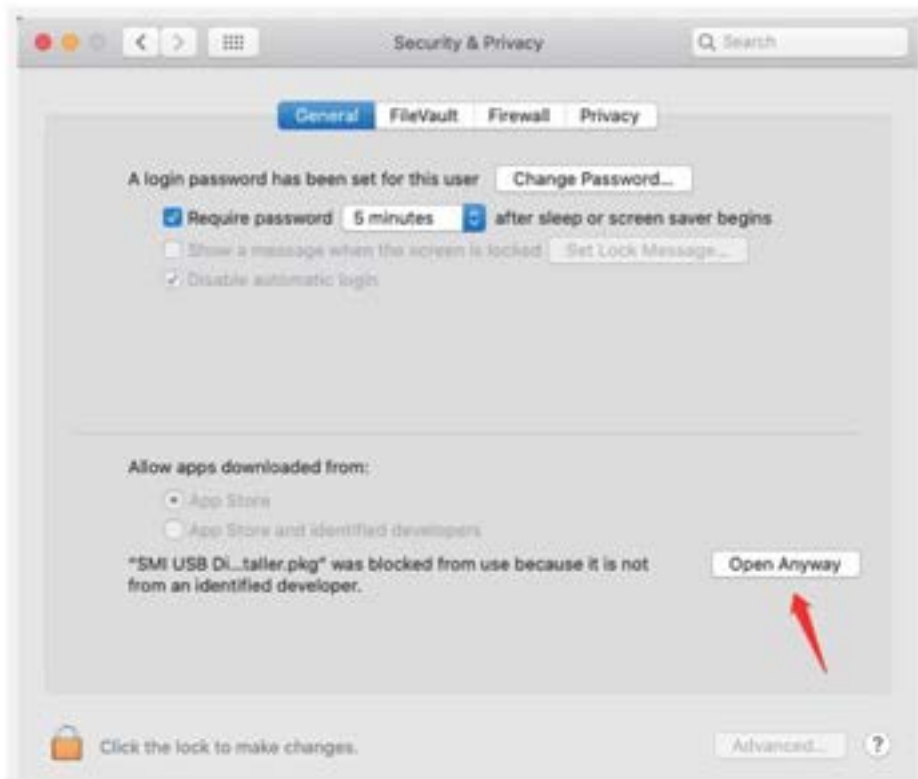


Notice:

Due to privacy policy applied in Mac, you may experience the following issue:



Select "System Preferences" and choose "Security & Privacy", Click on "Open Anyway" to approve of the driver installation.



4. When the installation is complete you will see the following. There is no need to install any additional driver. Please close the dialog box.



Mac OS Display Mode Settings

1. Open “System Preferences” and select “Displays”
2. Select Arrangement to change the position of the displays.

Example; If your newly extended display is physically to the left of your main display, you may want to click and drag the display to the left. If you are not sure which display is which click on it and it will have a red border

3. If you want both displays duplicated click on Mirror

Supported Resolutions:

Windows 10

3840×2160	30Hz
2560×1440	60Hz
1920×1080	60Hz
1680×1050	60Hz
1600×1200	60Hz
1600×900	60Hz
1440×1050	60Hz
1440×900	60Hz
1280×1024	60Hz
1280×800	60Hz
1280×720	60Hz
1152×864	60Hz
1024×768	60Hz
800×600	60Hz
720×480	60Hz
640×480	60Hz

Mac OSX

3840×2160	30Hz
2560×1440	60Hz
1920×1080	60Hz
1920×1080	30Hz
1600×900	60Hz
1280×720	60Hz

The exact list of supported resolutions depends on your monitor performance.

Support Options:

www.diamondmm.com

support@diamondmm.com