

# Diamond TB3MDS User Guide

## Table of Contents



SAFETY INSTRUCTIONS.....	1
COPYRIGHT .....	1
TRADEMARKS .....	1
<b>REGULATORY COMPLIANCE .....</b>	<b>2</b>
FCC CONDITIONS .....	2
CE.....	2
WEEE INFORMATION .....	2
<b>INTRODUCTION .....</b>	<b>3</b>
FEATURES.....	4
PACKAGE CONTENTS.....	5
SYSTEM REQUIREMENTS .....	5
<b>PRODUCT OVERVIEW .....</b>	<b>6</b>
<b>CONNECTION .....</b>	<b>9</b>
<b>AUDIO CONFIGURATION.....</b>	<b>12</b>

<b>SPECIFICATION .....</b>	<b>13</b>
----------------------------	-----------

Before attempting to connect, operate or adjust this product, please save and read the User's Manual completely. The style of the product shown in this User's Manual may be different from the actual unit due to various models.

## Safety Instructions

Always read the safety instructions carefully:

- ◆ Keep this User's Manual for future reference
- ◆ Keep this equipment away from humidity
- ◆ If any of the following situation arises, get the equipment checked by a service technician:
  - The equipment has been exposed to moisture.
  - The equipment has been dropped and damaged.
  - The equipment has obvious sign of breakage.
  - The equipment has not been working well or cannot get it to work according to the User's Manual.

## Copyright

This document contains proprietary information protected by copyright. All right is reserved. No part of this manual may be reproduced by any mechanical, electronic or other means, in any form, without prior written permission of the manufacturer.

## Trademarks

All trademarks and registered trademarks are the property of their respective owners or companies.

# Regulatory Compliance

## FCC Conditions

This equipment has been tested and found to comply with Part 15 Class B of the FCC Rules. Operation is subject to the following two conditions: (1) This device may not cause harmful interference. (2) This device must accept any interference received and include interference that may cause undesired operation.

## CE

This equipment is in compliance with the requirements of the following regulations: EN 55032/EN 55024: CLASS B

## WEEE Information

For EU (European Union) member users: According to the WEEE (Waste electrical and electronic equipment) Directive, do not dispose of this product as household waste or commercial waste. Waste electrical and electronic equipment should be appropriately collected and recycled as required by practices established for your country. For information on recycling of this product, please contact your local authorities, your household waste disposal service or the shop where you purchased the product.



# Introduction

The Diamond Thunderbolt 3 Titan Ridge Mini Dock is DP ( Dual Powered Device ), designed for bus-powered or self-powered dual-mode usage with extra connectivity demands and supports one DP 1.4 and one HDMI 2.0 output with HDR. With the Docking station, you can extend the connection of a computer to more USB peripherals, Ethernet network, the speaker and the microphone via Thunderbolt 3 USB-C interface. Feel free to plug in upside down for USB-C plug is reversible. Adopting PD Charging technology, upstream charging function through USB-C interface, you can charge the host up to 60W with USB-C PD Power adapter plug-in. With the Thunderbolt ports, the docking station enables you to enjoy the super speed data transmission between USB peripherals.



The Adopted Trademarks HDMI, HDMI High-Definition Multimedia Interface, and the HDMI Logo are trademarks or registered trademarks of HDMI Licensing Administrator, Inc. in the United States and other countries.

# Features

- ◆ Upstream Port
  - USB-C Thunderbolt 3 x1
- ◆ Downstream Port
  - USB-A 3.1 Gen 2 x2 \*
  - USB-C x1 (PD power in only)
- ◆ Video output
  - DP1.4 x1 (8K@30Hz)
  - HDMI 2.0 (4K@60Hz)
- ◆ RJ45 Gigabit Ethernet
- ◆ Upstream PD charging: Support 5 /9 /15 /20V from PD 45W ( with power adapter 60W or higher ) up to PD 60W
- ◆ Combo audio jack

\*When self-powered mode, it can support USB 3.1 Gen 2 x 2, when bus-powered mode, it can support USB 3.1 Gen 2 x 1 and USB 2.0 x 1, 1st come 1st serve.

# Package Contents

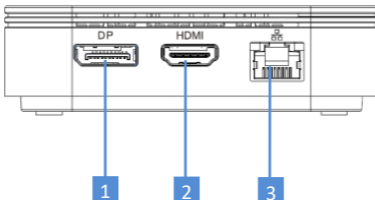
- ◆ Diamond TB3MDS Thunderbolt 3 Mini Dock  
x1

# System Requirements

- ◆ Supported Operating System
  - Windows® 10
  - Mac OS® ( macOS 10.15.3 above)

# Product Overview

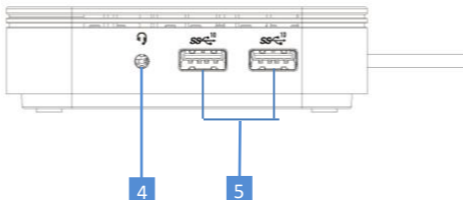
## Front



Item	Description
1. DisplayPort 1.4	Connect to the DP monitor
2. HDMI 2.0 port	Connect to the HDMI monitor
3. RJ45 port	Connect to an Ethernet



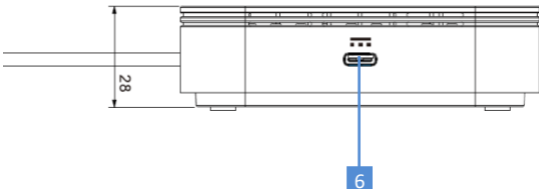
## Rear



Item	Description
4. Combo audio jack	Headset
5. USB-A 3.1 Gen 2 x2*	Connect to USB devices

\*When self-powered mode, it can support USB 3.1 Gen 2 x 2, when bus-powered mode, it can support USB 3.1 Gen 2 x 1 and USB 2.0 x 1, 1st come 1st serve.

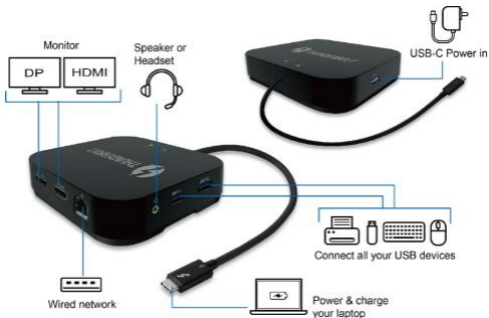
## Side



Item	Description
6. USB-C PD power in	Connect to the USB-C power adapter (USB-C Power adapter should be 60W or higher.)

# Connection

To connect the USB peripherals, Ethernet, speaker, and microphone, follow the illustrations below to connect the corresponding connectors.



---

**NOTE:** The following strings and screenshots may vary slightly from each operating system

---

## **Windows® 10**

1. Select **Always Connect** to approve the device connecting, then click **OK**.



2. To make sure the devices have been connected. Click on the desktop on the corner of the screen to open **Thunderbolt Software**.



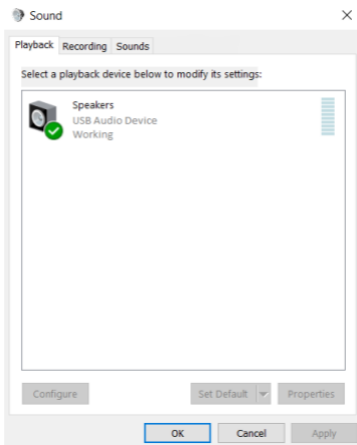
3. In the window that appears the device has been connected.



# Audio configuration

By default, when the docking station is connected to a computer, the audio configuration may be changed to **USB (Multimedia) Audio Device** automatically (this setting depends on models). If it does not work, follow the steps below to setup.

1. Open **Control Panel** and then select the hardware and sound icon.
2. Click **Sound > Manage audio devices** and then select **USB Audio Device**.



# Specification

User Interface	Upstream	USB-C Thunderbolt 3 x1
	Downstream	DP1.4 connector x1
		HDMI 2.0 connector x1
		USB-C x1 (Power in only)
		USB-A 3.1 Gen 2 x2*
		RJ45 connector x1
Combo Audio Jack x1		
Video	Resolution	Single 8K@30Hz or Dual 4k@60Hz
Ethernet	Type	10/100/1000 BASE-T
Power	Power Mode	Bus-powered/Self-powered
	Max. PD Charging	60W
Working Environment	Operation Temperature	0~35 degree
	Storage Temperature	-40~80 degree
Compliance		CE, FCC, VCCI, RCM

\*When self-powered mode, it can support USB 3.1 Gen 2 x 2, when bus-powered mode, it can support USB 3.1 Gen 2 x 1 and USB 2.0 x 1, 1st come 1st serve.

## Support

Phone: 800 503 2378

Email: [support@diamondmm.com](mailto:support@diamondmm.com)

Chat: [www.diamondmm.com](http://www.diamondmm.com)



Thunderbolt 3 Mini Dock  
User's Manual



V1.2