

DMCap Manual

Contents

V1.0

Chapter1	Introduction	2
1.1	Software Features	2
1.2	Console Setup.....	2
Chapter 2	DMCap	5
2.1	Main Panel.....	5
2.2	The Tool Menu	11
Chapter 3	Playback.....	15
Chapter 4	Setup.....	16
4.1	General Setting	16
Chapter5	Schedule recording	21

Chapter1 Introduction

Thanks for your purchasing. It is highly recommended that you check all the functions that the device supports carefully before using the program. This manual will guide you through the essential information of how to use this application program.

DMCap is a multi-functional, graphical and easy-to-use application software that offers you the most comprehensive multimedia entertainment enjoyment. Please notice that the multimedia functions may vary depending on the product you purchased.



1.1 Software Features

- It's a multi-functional, graphical software application program that consumes less RAM space and CPU capacity.
- Playback recorded videos in PIP mode
- Sleep timer (auto close AP, Auto computer shutdown)
- Snapshot format: BMP, JPG, PNG, TIFF
- Continuous snapshots counts from 1 to 100
- Support multiple record format
- Support Schedule recording

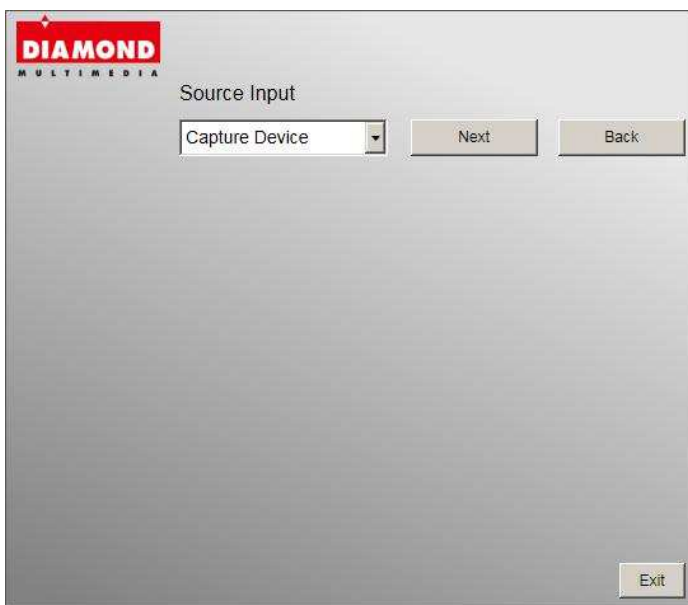
1.2 Console Setup

1.2.1 Signal setting

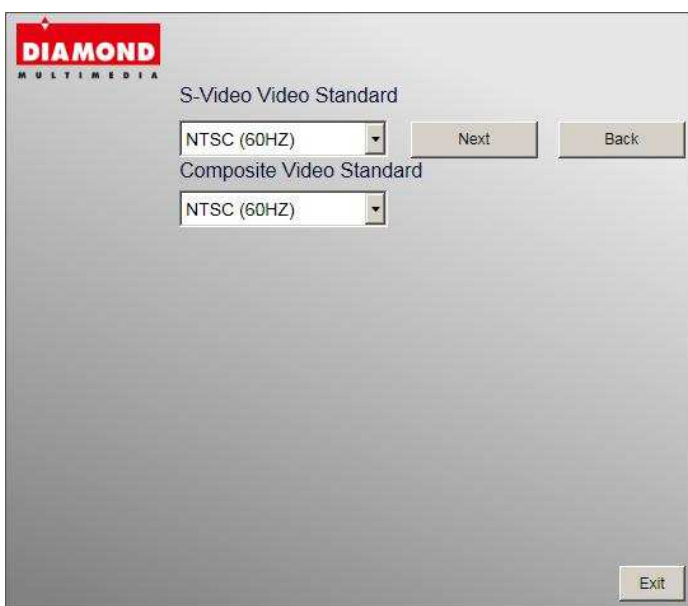
When you run DMCap for the first time, the system will guide you through the necessary steps of signal setting.



1. Capture Device belongs to HD Capture Device. Please click “*Next*”.



2. Here we can see the capture device, and click “*Next*”.

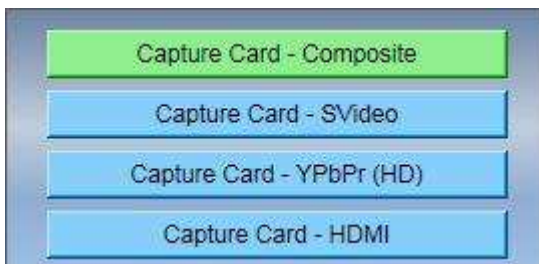


3. Please Select Video Standard and click “*Next*”.



4. Please determine the video system of your input source. Click “*Exit*” to finish the setup.

1.2.2 Source Inputs



1. Select your device and signal source such as *Capture Card – YPbPr(HD)*, *Capture Card – HDMI* DMCap will import the signal source you select. It depends on the device signal source and show here.

Capture Card – YPbPr(HD): If you choose Capture Card – YPbPr(HD) , please make sure your video source display setting is 480i / 576i / 480P / 576P / 720P / 1080i

Capture Card – HDMI: If you choose Capture Card – HDMI , please make sure your video source display setting is 480P / 576P / 720P / 1080i

Chapter 2 DMCap

You can capture video from game consoles. Once you have done your initial setup (source input), you can enjoy playback recorded clip video from game consoles.

2.1 Main Panel



Buttons

	Capture		Snapshot		Display Ratio		Volume Down
	Volume Up		Mute		Playback		Setup
	Source Input		Schedule Record				

Capture: Click to capture the scenes you like. Once you capture the scene, it is saved in your Video Path.



If you'd like to stop capture, click capture button again or right click on the screen and then enable "Stop

Capture”.



Snapshot: You can click the “Snapshot” icon to take snapshots. When the screen shows “Snapshot OK”, it means the image has been successfully taken into your file folder as picture files.



Display Ratio: Change ratio base on a routine setting. (Free/4:3/16:9/Base on source)



You can adjust your display ratio when you move your mouse cursor to the arrow at the right of this option. There are Free, 4:3, 16:9. It is the same as you click on the Display Ratio function icon on the interface.

Free: The initial ratio when you start DMCap and you can adjust it by dragging the edge of the DMCap window.

4:3: Its produces a traditional square display

16:9: Its produces a rectangular, wide screen display

Volume Down: Adjust DMCap volume to be loud or quiet



Volume UP: Adjust DMCap volume to be loud or quiet



Audio Mute Mode: Turn DMCap volume on or off.



Playback: Playing recorded file from PC.



Schedule Recording: You can schedule your record process



Source Input: Setting your video source

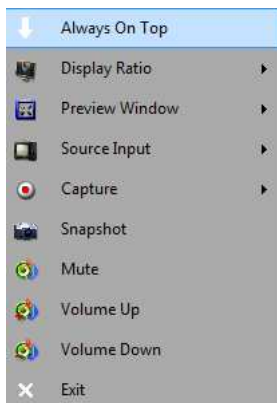


Setup: Setting functions



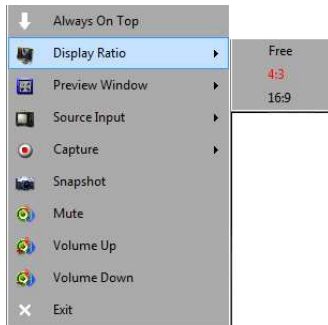
2.2 The Tool Menu

Always On Top:

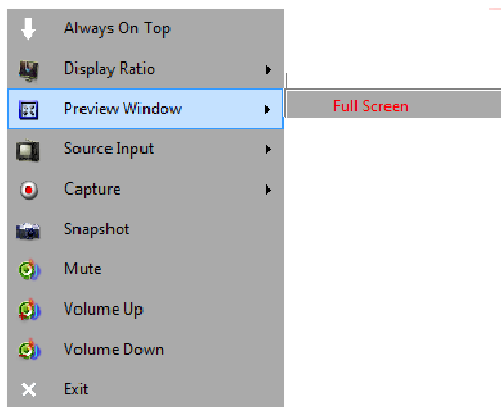


Apply To All Channels: If you select this option, the adjusted display ratio will be applied to all of your available channels.

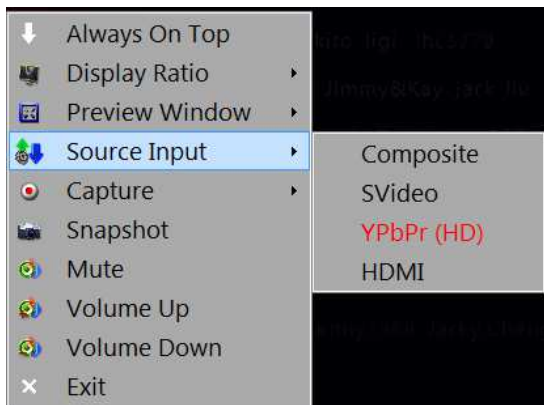
Display Ratio: You can change your display ratio from free, 4:3, 16:9



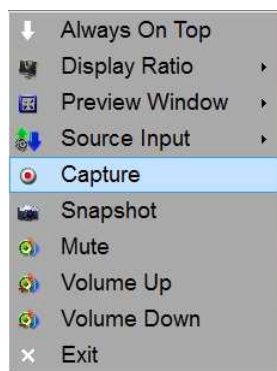
Preview Windows: You can setting Full Screen



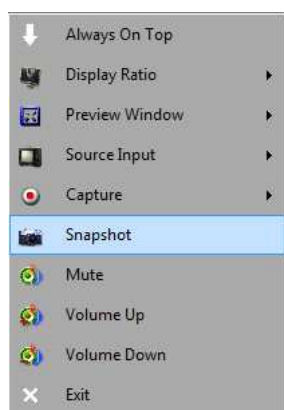
Source Input: You can choose signal sources



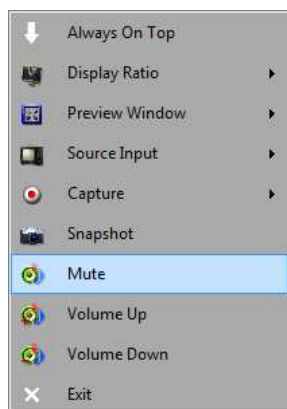
Capture: TS format is supported.



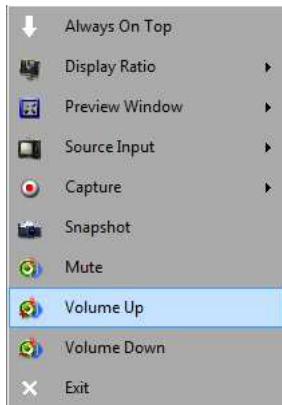
Snapshot: Activate Snapshot function to take the photo. You can also do the same if you click on the Snapshot icon on the main control bar.



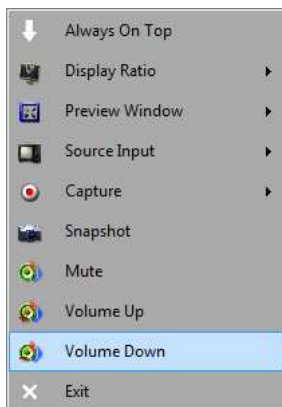
Mute: you can set the DMCap no audio output.



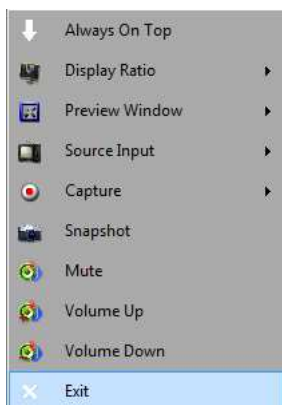
Volume Up: Increase the audio volume.




Volume Down: Decrease the audio volume.

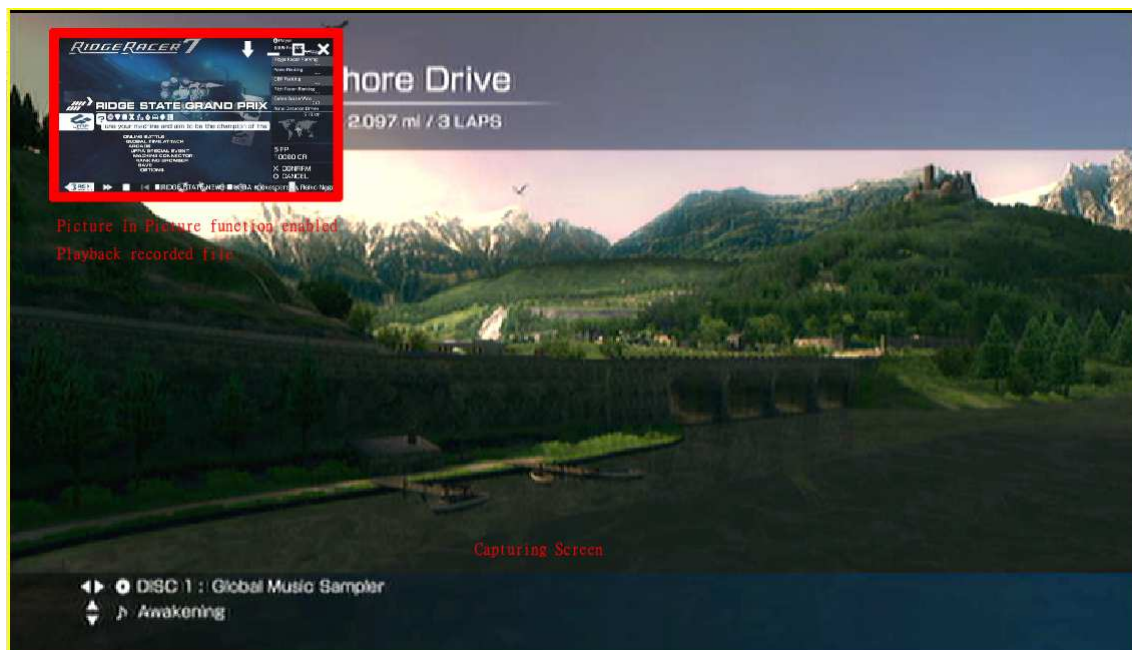
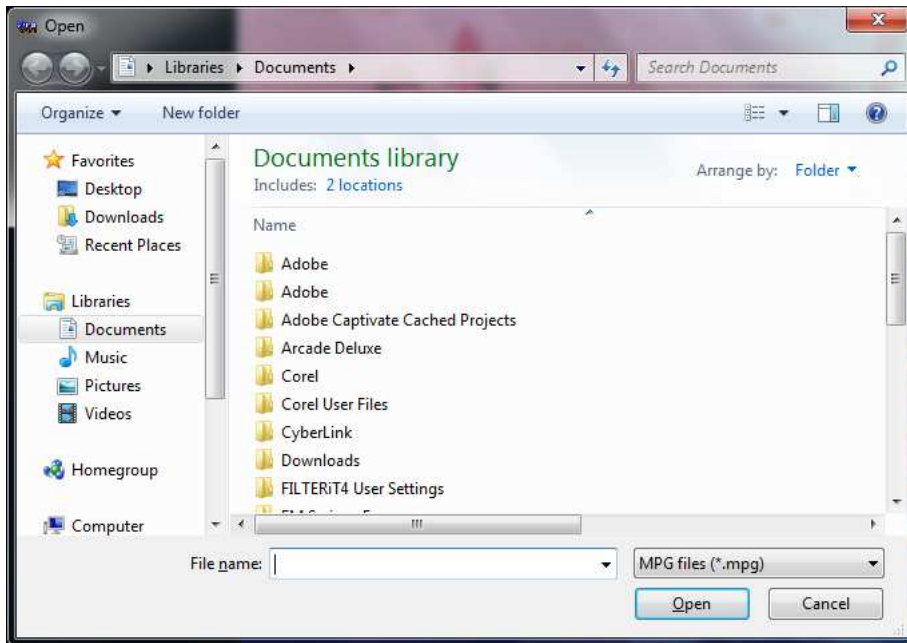


Exit: Close / Exit DMCap window



Chapter 3 Playback

When you click on this icon , you can choose a recorded file for playback or a file from folders in your PC.



Performed the PIP mode when playback recorded file

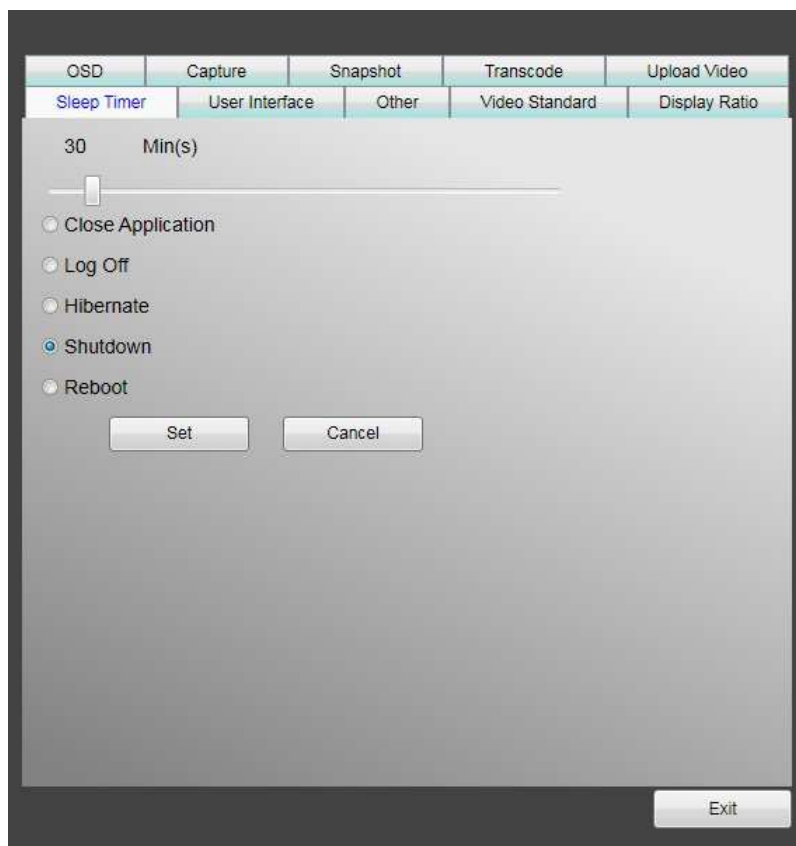
Chapter 4 Setup

In DMCap, you can simply make settings as your favorite in Setup page. Since DMCap has been launched, click Setup button to access Setup page.

4.1 General Setting

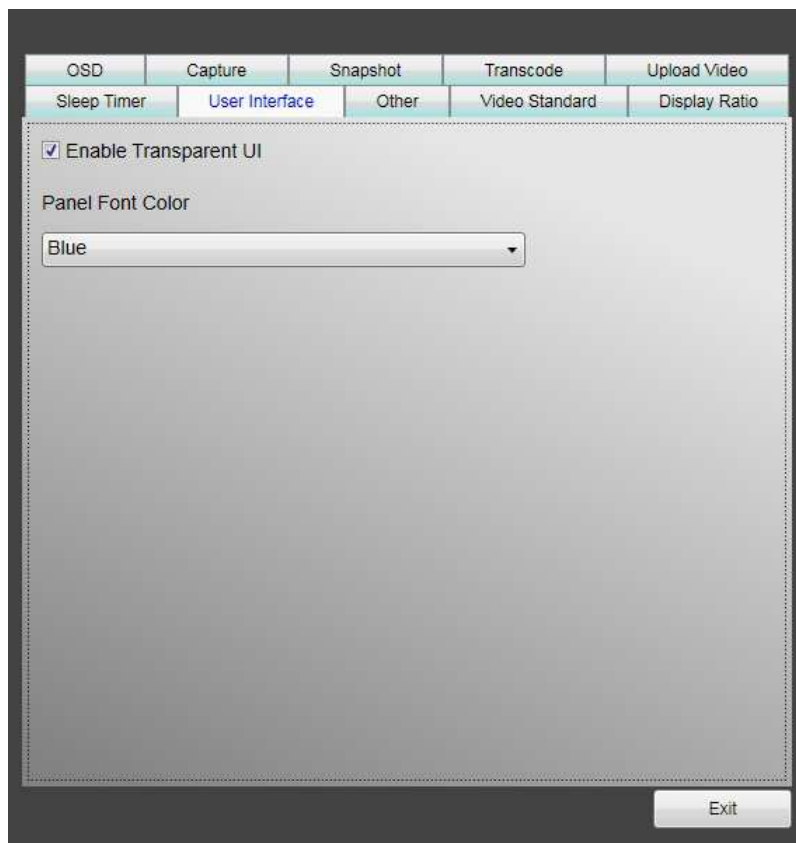
You can find *Sleep Timer*, *User Interface* and *other options*, in Setup page. Those can help you to improve your power saving, scanning adjustment, colorful UI and language and location.

4.1.1 Sleep Timer

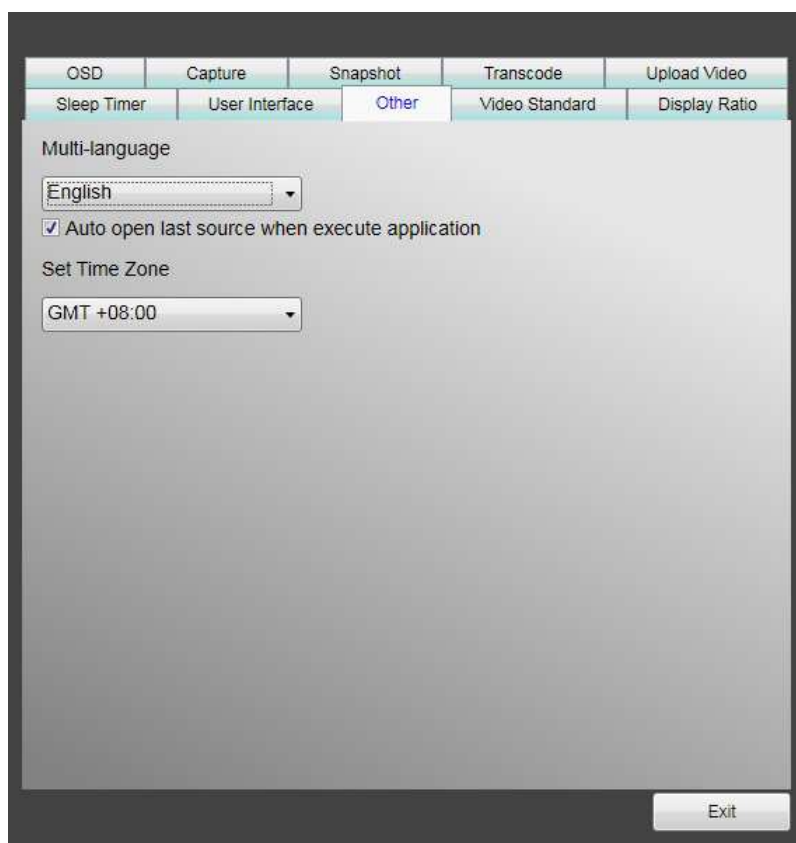


You might watch TV but get sleepy after minutes later or leave your TV for emergency. For any specific reason, you would like to ask DMCap to help you on something. There are 5 options, Close Application, Log off, Hibernate, Shutdown, and Reboot, for setting. Besides, you can move time shuttle left or right to adjust time period.

4.1.2 User Interface

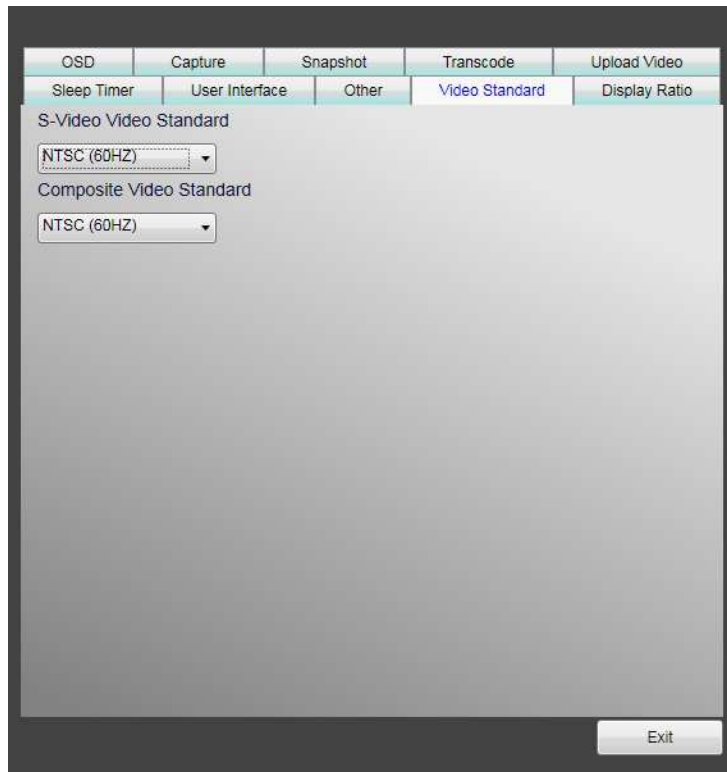


4.1.3 Other



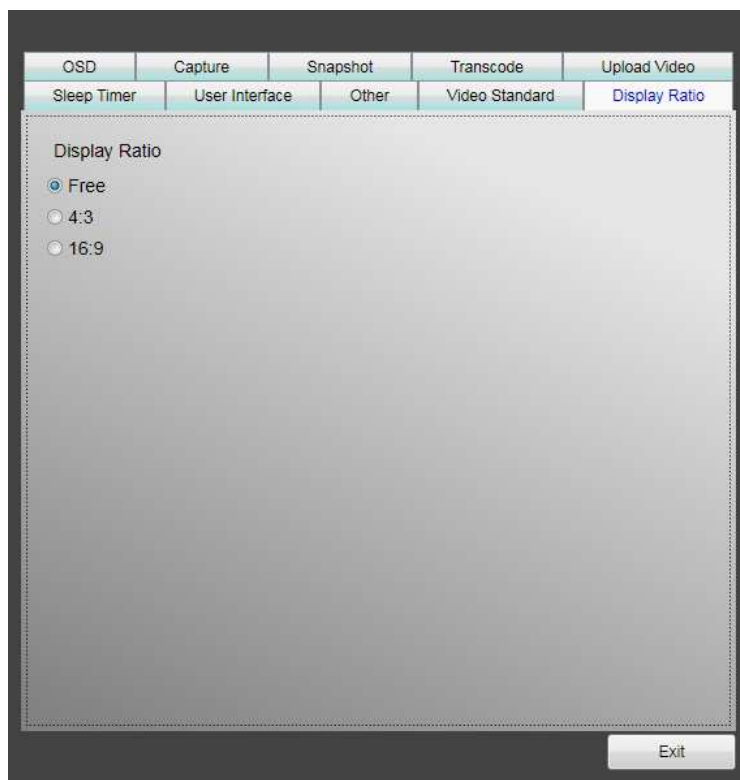
4.1.4 Video Standard.

Here we can set Video Standard



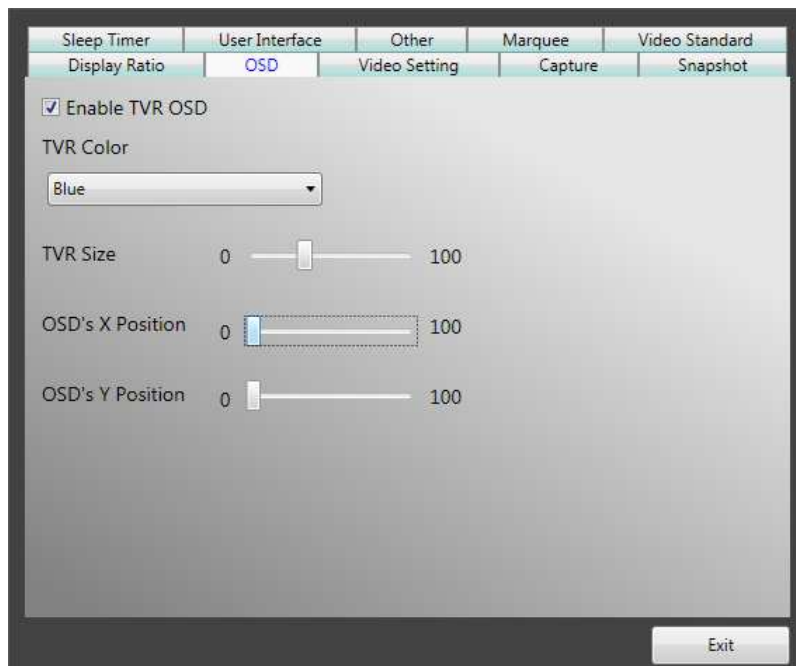
4.1.5 Display Ratio.

Here we can set the display ratio: Free, 4:3, 16:9



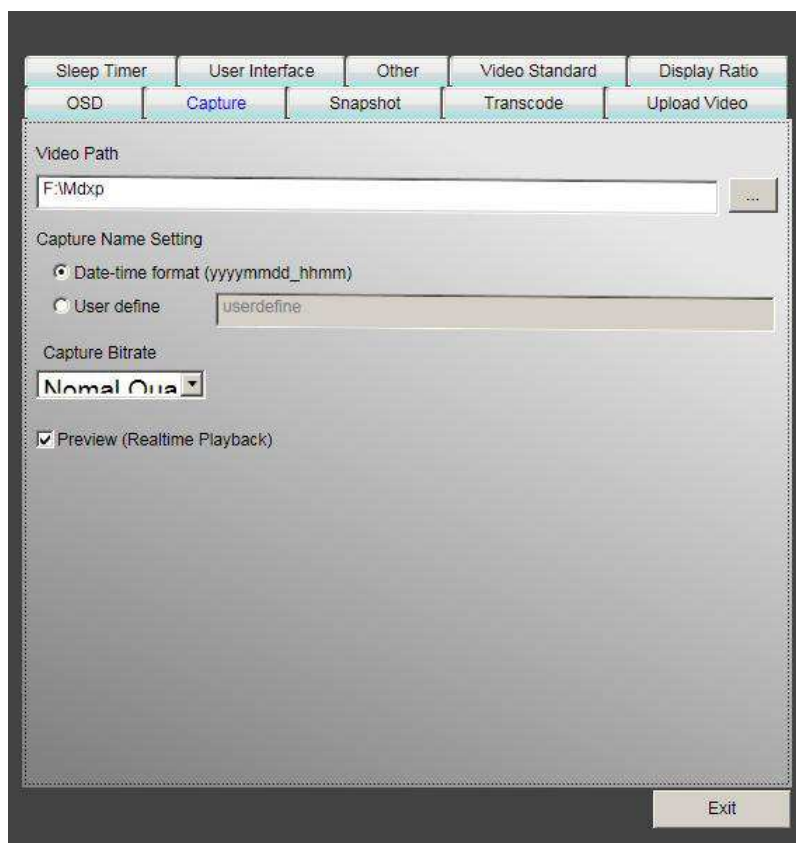
4.1.6 OSD

Here we can set the OSD color, show or not, and adjust the position, the font color.



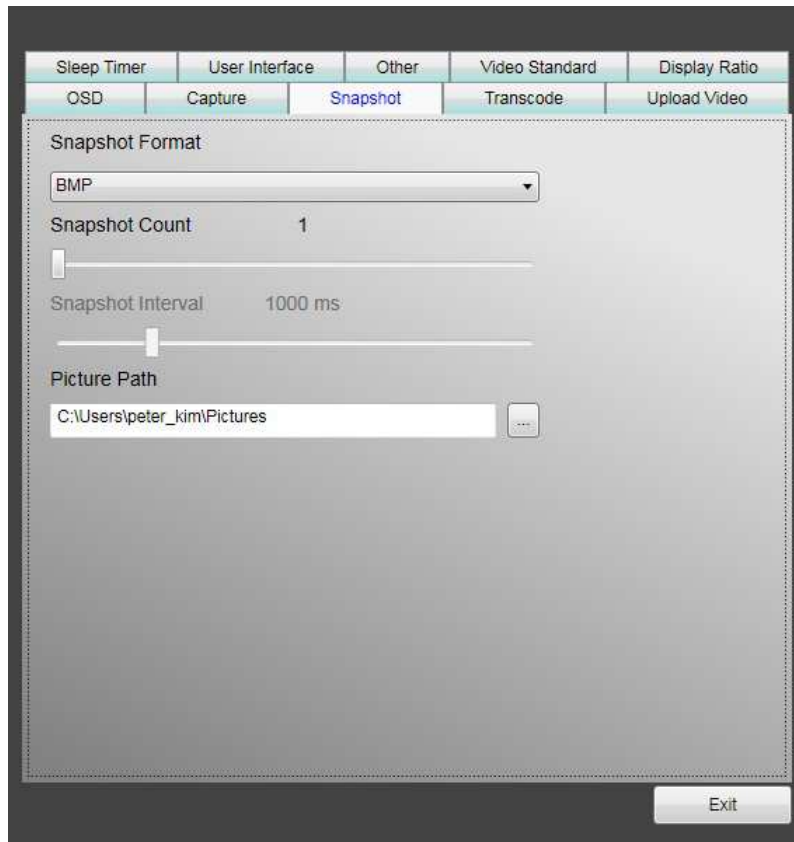
4.1.7 Capture

Here we can change video path, capture name setting.




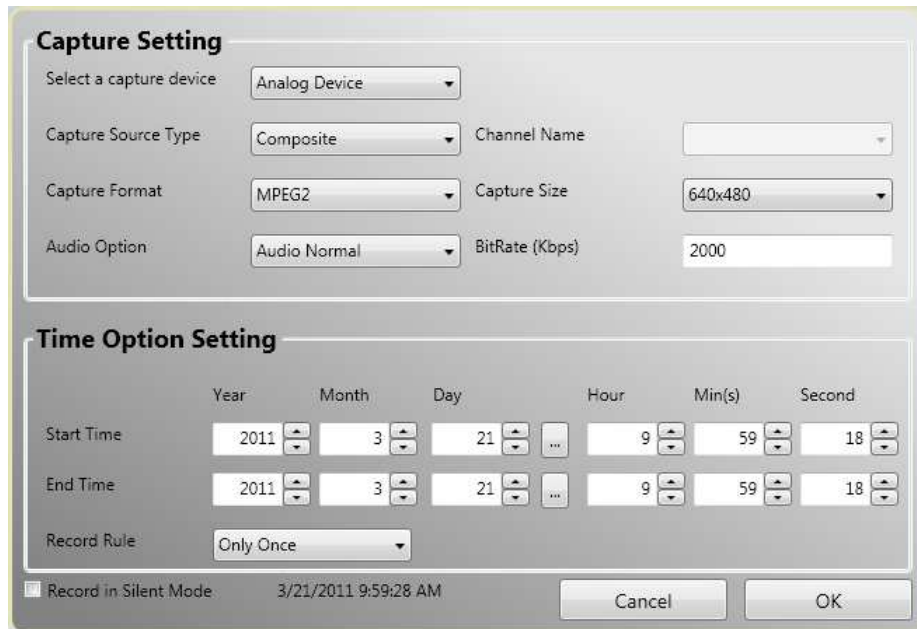
4.1.8 Snapshot

Here we can set the snapshot file format, where to save the pics, and the how many pics will be saved when using the snapshot function.



Chapter5 Schedule recording

You can click the schedule record  on the main floating bar to use the schedule record function.



The screenshot shows a 'Capture Setting' dialog box with two main sections: 'Capture Setting' and 'Time Option Setting'.

Capture Setting

- Select a capture device: Analog Device (dropdown)
- Capture Source Type: Composite (dropdown)
- Channel Name: (empty text field)
- Capture Format: MPEG2 (dropdown)
- Capture Size: 640x480 (dropdown)
- Audio Option: Audio Normal (dropdown)
- BitRate (Kbps): 2000 (text field)

Time Option Setting

	Year	Month	Day	Hour	Min(s)	Second
Start Time	2011	3	21	9	59	18
End Time	2011	3	21	9	59	18

Record Rule: Only Once (dropdown)

☒ Record in Silent Mode: 3/21/2011 9:59:28 AM

Buttons: Cancel, OK

Capture device : your concurrent using device.

Capture Source Type : depends on your signal source.

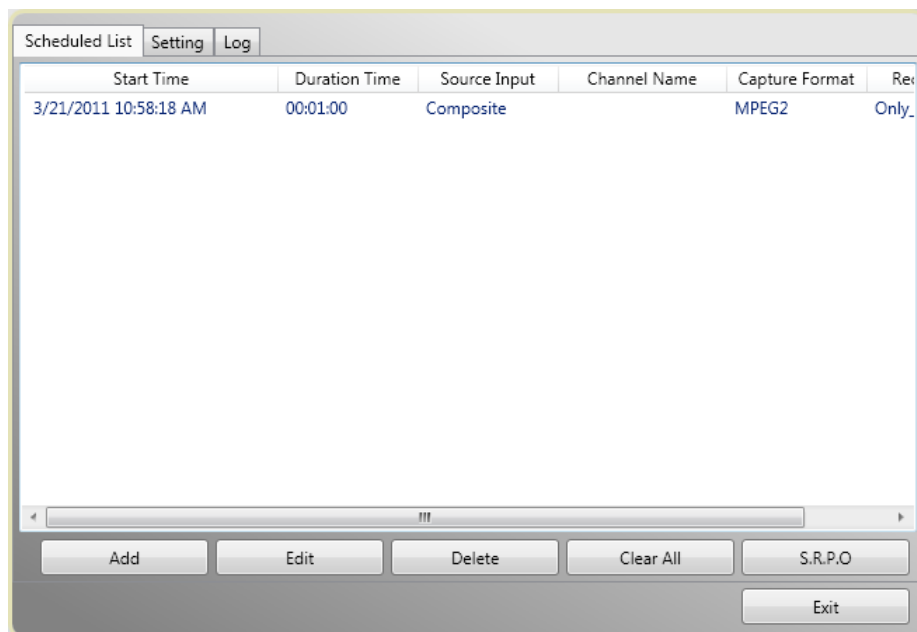
Capture Format / Capture Size / Audio option / BitRate : choose the proper option to meet your need.

Time Option setting : You can set the Start / End time.

Record Rule : You can choose the record rule such as only once / everyday / every Sunday.....

Record in silent mode : silent mode won't show the video on screen when recording.

In Schedule List Tab. You can see your schedule entry here.



Add : Add new schedule entry

Edit : Modify the selected schedule entry

Delete : Delete the selected schedule entry

Clear All : Clear All schedule entries

S.R.P.O. : Schedule Record in Power Off mode. When click the S.R.P.O, system will enter hibernate mode and power off. Because the S.R.P.O need system hibernate function enabled, please be sure the system supports hibernate function. System BIOS set to S1 is OK.

In Setting Tab.

Scheduled List Setting Log

Save Path

C:\Users\Bio\Documents

File Name Setting

☒ Use datetime formate file name

☐ Use specific name userdefine

System Option

System option after record No Action

☒ Auto-execute at start up

Exit

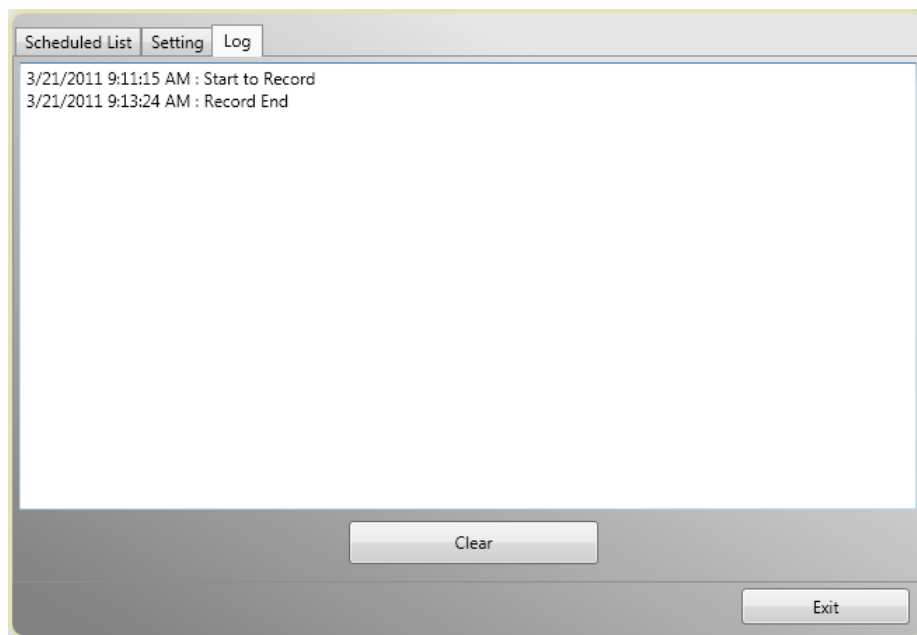
Save path : Indicate where to save the recorded file.

File Name : 2 options here, use specific name or default name.

System Option : After record is completed, you can choose No Action / Suspend / Shutdown the PC.....

Auto-execute at start up : To ensure the schedule record perform correctly, please enable the checkbox.

In Log tab.



Here will show the log for schedule recording.