

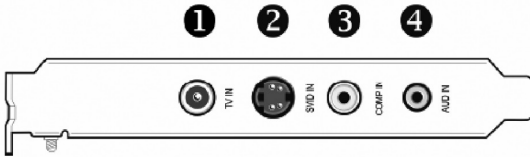


TV Wonder™ 600 PCI/PCIE

Quick Install Guide Guide de démarrage rapide

Backplate Connections

Figure 2–2 ATI TV Wonder™ 600 Backplate



The following connections are available on the backplate of your tuner card:

- 1 TV IN. Coaxial input for digital (ATSC) and analog (NTSC) TV.
- 2 SVID IN. Video input for S-Video (direct).
- 3 COMP IN. Composite connector for connecting TV, DVD players, or similar devices.
- 4 AUD IN. Use the included adapter for 2-RCA to 3mm audio input.

Hardware Installation

To install your hardware:

1. Turn off the computer, monitor, and other peripheral devices.
2. Unplug the computer's power cord, and disconnect all cables from the back of your computer.

Caution:

Wait approximately 20 seconds after unplugging the power cord before disconnecting a peripheral or removing a component from the motherboard to avoid possible damage to the motherboard.

3. Remove the computer cover. If necessary, consult your computer's manual for help in removing the cover.

Caution:

Remember to discharge your body's static electricity by touching the power supply or the metal surface of the computer chassis before touching the motherboard or components.

4. Locate an available x1 PCI Express slot and, if necessary, remove the metal backplate cover.
5. Align your card with the slot, then press the card in firmly until it is fully seated.
6. Screw in or fasten the card securely and replace your computer cover.
7. Reconnect any cables you have disconnected, and then plug in the computer's power cord.
8. Connect your TV to the connectors on the backplate of your tuner:

- For over-the-air digital TV, connect a DTV antenna to the TV IN connector.
 - For analog TV connect your cable TV coaxial cable to the TV IN connector.
9. Turn on the monitor, and then your computer.
If you have properly installed your card, operating system messages will appear once the boot procedure is finished. Proceed with the installation of drivers and software.

Software Installation

Note:

- You must install or reinstall the drivers and software in the following cases:
- After you have installed the card in your system.
- After you have reinstalled or upgraded your operating system.
- To install or remove the drivers, you must be logged on as a user with administrator rights. We also recommend that you have the latest Windows Service Pack installed.
- If a previous version of the product is installed on your machine, uninstall the drivers and software for the previous version.
- The setup and install screens are displayed in English if your operating system's language is not supported

To install your software:

1. After installing your tuner, start your system.
2. When the Found New Hardware Wizard appears, click Cancel. When the System Settings Change window asks you to restart your computer, click No.
3. Insert the installation CD into your CD drive. The installation screen appears.
If your CD autorun is not enabled or the ATISSETUP utility does not start automatically, follow these steps:
 - a. In the Windows task bar, click the Start button.
 - b. Click Run.
 - c. In the Run dialog, type X:\ATISSETUPEXE (where X: is your CD/DVD drive).
4. Click Software Install. The Software Install screen appears.
5. Click Install CATALYST. The ATI Software screen and installation wizard appear.
6. Click Next and follow the instructions in the installation wizard to install your drivers and configuration software.

Note: The Express installation option is recommended. Custom installation allows you to select individual software components for installation.

7. When the driver and software setup concludes, the wizard's Setup Complete dialog box appears. To restart your computer and immediately enable the installed software, click Finish.

Note: If you select "No, I will restart my computer later", click Finish to close the wizard, then click Back to return to the main installation screen, and Exit to close the installer.

You may be required to reboot your computer after installing the drivers and software.

After the system reboots, the Found New Hardware message may display the Digital Signature Not Found message. Click Yes or Continue to complete the driver installation.

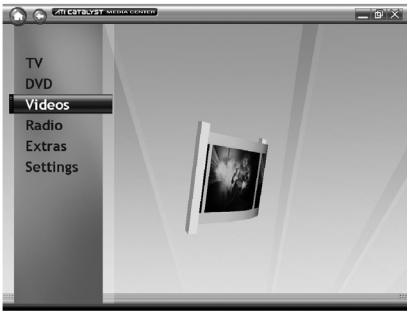
How to Convert A Video or Recorded TV to Portable Media Devices with

ATI CATALYST MEDIA CENTER

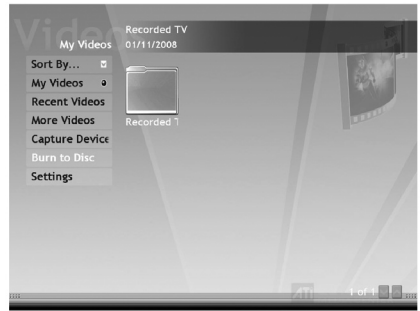


Start ATI Catalyst Media Center

1. Select "Videos" to access the video library.



2. Find the recorded TV or video files in the listed folders.



3. Choose the recorded TV video file to be converted, right click it and choose "Convert"



4. Select the desired conversion format:

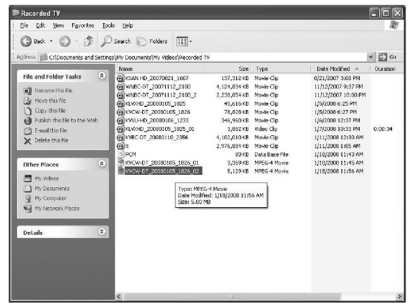
- iPod & PSP Compatible
- DVD Compatible
- DivX Compatible
- Windows Media
- H.264 AVC



5. The progress is shown as the video is converted.



6. Drag and drop or copy your converted video file to your portable media player.



Technical Support

Technical Support Options Free Telephone Support

818-357-5165

(long distance rates may apply)

Mon - Fri, 8 - 4:30 PST

<http://www.diamondmm.com>

One Year Limited Warranty

The warranty described below is extended only to the original buyer and is not transferable.

PLEASE NOTE THAT THE PRODUCT YOU HAVE PURCHASED IS DISTRIBUTED AND WARRANTED BY DIAMOND MULTIMEDIA ("DIAMOND") AS DESCRIBED BELOW. QUESTIONS REGARDING THIS WARRANTY AND WARRANTY CLAIMS SHOULD BE MADE TO DIAMOND.

Diamond warrants to the original purchaser of the hardware product, that the product is free from defects in materials or workmanship under normal use and service for a period of one (1) year from the date of purchase at retail. All cables and accessories provided with a Diamond product are warranted to be free from defects in materials or workmanship under normal use and service for a period of for (90) ninety days from date of purchase at retail.

Diamond 's sole obligation under this warranty shall be, at Diamond 's option, to: (i) repair the defective product or part; (ii) deliver to customer an equivalent product or part to replace the defective product. When a product or part is replaced or exchanged, the item becomes customer's property and the replaced or exchanged item becomes Diamond 's property. When a refund or replacement product is given, the defective product becomes Diamond's property.

Replacement parts or products may be new or include serviceable used parts with at least the same functional equivalence to the original product. If, at the time of repair, a product is "out of warranty" or within the last ninety (90) days of the warranty period, Diamond warrants any repair for ninety (90) days. All software provided is subject to the terms of the associated software end-user license agreement.

WARRANTY EXCLUSIONS AND LIMITATIONS

THIS WARRANTY IS ONLY APPLICABLE TO PRODUCTS SOLD BY DIAMOND AFTER MAY 1, 2007.

THIS WARRANTY IS ONLY APPLICABLE IF PRODUCT REGISTRATION IS RECEIVED WITHIN 30 DAYS OF THE DATE THE PRODUCT IS PURCHASED. TO BE ELIGIBLE FOR THIS WARRANTY, YOU MUST REGISTER AT diamondmm.com. THE ORIGINAL SALES RECEIPT SHOWING THE DATE OF PURCHASE OF THE PRODUCT IS PROOF OF THE DATE OF PURCHASE. DIAMOND MAY REQUEST THE ORIGINAL SALES RECEIPT OR A COPY AS PROOF OF DATE OF PURCHASE.

Diamond does not warrant third party products which Diamond distributes "AS IS" unless otherwise specified. Third party products may be warranted by the third party.

Diamond makes no warranty or representation that: (i) the operation of the product will be uninterrupted or error free; (ii) defects in the product will be corrected; or (iii) that the product will meet Customer's requirements or work in combination with any hardware or software provided by third parties.

TO THE FULLEST EXTENT ALLOWED BY LAW, THE WARRANTIES, REMEDIES AND LIMITATIONS CONTAINED HEREIN ARE EXCLUSIVE AND ARE IN LIEU OF ALL OTHER WARRANTIES, TERMS OR CONDITIONS, EXPRESS OR IMPLIED, EITHER IN FACT OR BY OPERATION OF LAW, STATUTORY OR OTHERWISE, INCLUDING WITHOUT LIMITATION, WARRANTIES, TERMS OR CONDITIONS OF MERCHANTABILITY, FITNESS FOR A PARTICULAR PURPOSE, QUALITY, CORRESPONDENCE WITH DESCRIPTION AND NON-INFRINGEMENT, ALL OF WHICH ARE EXPRESSLY DISCLAIMED.

DIAMOND WILL NOT BE LIABLE UNDER THIS WARRANTY IF ITS TESTING AND EXAMINATION DISCLOSE THAT THE ALLEGED DEFECT OR MALFUNCTION IN THE PRODUCT OR SOFTWARE DOES NOT EXIST OR WAS CAUSED BY CUSTOMER'S OR ANY THIRD PARTY'S MISUSE, NEGLIGENCE, IMPROPER INSTALLATION OR TESTING, UNAUTHORIZED ATTEMPTS TO OPEN, REPAIR OR MODIFY THE PRODUCT OR SOFTWARE, OR ANY OTHER CAUSE BEYOND THE RANGE OF THE INTENDED USE, OR BY ACCIDENT, FIRE, LIGHTNING, OTHER HAZARDS, OR ACTS OF GOD. THIS WARRANTY WILL NOT APPLY TO PRODUCTS USED FOR NUCLEAR RELATED, WEAPONS RELATED, MEDICAL OR LIFE SAVING PURPOSES.

TO THE FULLEST EXTENT ALLOWED BY LAW, DIAMOND ALSO EXCLUDES FOR ITSELF AND ITS SUPPLIERS ANY LIABILITY, WHETHER BASED IN CONTRACT OR TORT (INCLUDING NEGLIGENCE), FOR INCIDENTAL, CONSEQUENTIAL, INDIRECT, SPECIAL OR PUNITIVE DAMAGES OF ANY KIND, OR FOR LOSS OF REVENUE OR PROFITS, LOSS OF BUSINESS, LOSS OF INFORMATION OR DATA, OR OTHER FINANCIAL LOSS ARISING OUT OF OR IN CONNECTION WITH THE SALE, INSTALLATION, MAINTENANCE, USE, PERFORMANCE, FAILURE, OR INTERRUPTION OF ITS PRODUCTS, EVEN IF DIAMOND, ITS SUPPLIERS OR ITS RESELLER HAS BEEN ADVISED OF THE POSSIBILITY OF SUCH DAMAGES. DIAMOND 'S SOLE LIABILITY WITH RESPECT TO ITS PRODUCT IS LIMITED TO REPAIR OR REPLACEMENT OF THE PRODUCT, AT DIAMOND 'S OPTION. THIS DISCLAIMER OF LIABILITY FOR DAMAGES WILL NOT BE AFFECTED IF ANY REMEDY PROVIDED HEREIN SHALL FAIL FOR ESSENTIAL PURPOSE.

DISCLAIMER: Some jurisdictions may not allow the exclusion or limitation of incidental or consequential damages for products supplied to consumers, or the limitation of liability for personal injury, so the foregoing limitations and exclusions may not apply or may be limited in their application to you. When implied warranties are not allowed to be excluded in their entirety, they will be limited to the duration of the applicable written warranty. This warranty gives you specific legal rights that may vary depending on the law of the applicable jurisdiction.

OBTAINING WARRANTY SERVICE: Please review the online "help" resources referred to in the accompanying documentation before seeking warranty service. If the product is still not functioning properly after making use of these resources, please access the online help website at diamondmm.com for warranty instructions or to obtain warranty services. Some additional charges may apply for phone support.

Diamond Multimedia

9650 DeSoto Ave.
Chatsworth, CA. 91311

www.diamondmm.com